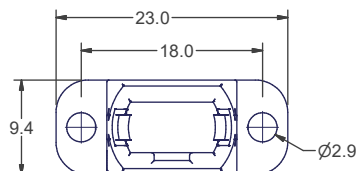
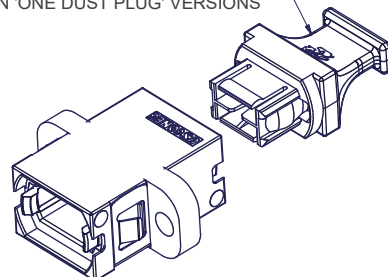


FULL FLANGE

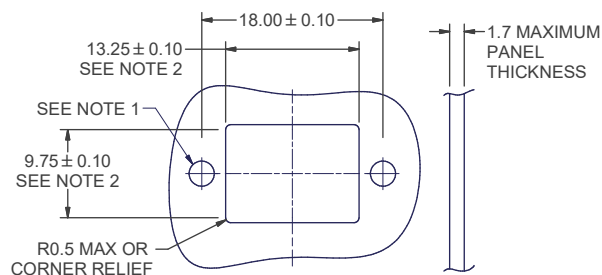
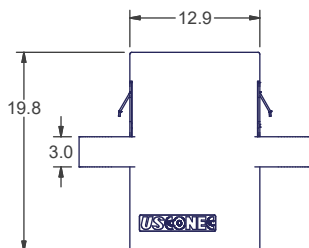


DUST PLUG INSTALLED
ON END OPPOSITE SPRING CLIP
ON 'ONE DUST PLUG' VERSIONS

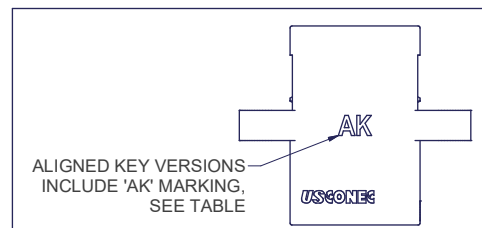


NOTES:

1. RECOMMEND USE OF M2.5 OR 4-40 SCREW, OR SCREW W/ NUT, SCREW HEAD DIAMETER & NUT WIDTH $\leq 5\text{mm}$. (SCREW & NUT NOT PROVIDED). RECOMMEND 2in-lbf TORQUE FOR SCREW MOUNT APPLICATIONS.
2. ALSO COMPLIANT WITH FOCIS STANDARD TOLERANCE OF ± 0.25



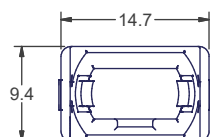
RECOMMENDED MOUNTING CUTOUT



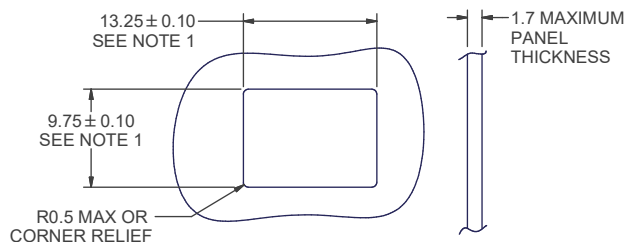
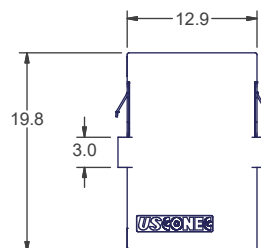
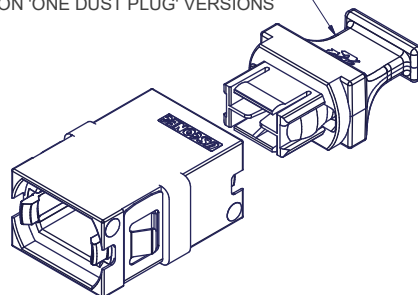
FULL FLANGE

P.N. with One Dust Plug	P.N. with Two Dust Plugs	Color	Key Orientation
12036	12216	Black	Opposed
12037	12221	Gray	Aligned
12212	12217	Beige	Opposed
12213	12218	Green	Opposed
12214	12219	Aqua	Opposed
12215	12220	Blue	Opposed
13772	13773	Magenta	Opposed
16416	16417	Mustard	Opposed
16706	16707	Heather Violet	Opposed
16779	16780	Munsell Violet	Opposed
17856	17857	Yellow	Opposed
17876	17877	Red	Opposed
19457	19458	Lime	Opposed
19929	19930	White	Opposed
22354	22355	Aqua	Aligned
22356	22357	Lime	Aligned
22358	22359	Heather Violet	Aligned

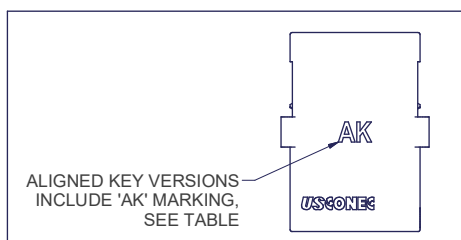
REDUCED FLANGE



DUST PLUG INSTALLED
ON END OPPOSITE SPRING CLIP
ON 'ONE DUST PLUG' VERSIONS



RECOMMENDED MOUNTING CUTOUT



REDUCED FLANGE

P.N. with One Dust Plug	P.N. with Two Dust Plugs	Color	Key Orientation
12041	12226	Black	Opposed
12042	12231	Gray	Aligned
12222	12227	Beige	Opposed
12223	12228	Green	Opposed
12224	12229	Aqua	Opposed
12225	12230	Blue	Opposed
13852	13853	Magenta	Opposed
16418	16419	Mustard	Opposed
16709	16710	Heather Violet	Opposed
16782	16783	Munsell Violet	Opposed
17858	17859	Yellow	Opposed
17878	17879	Red	Opposed
19459	19460	Lime	Opposed
19931	19932	White	Opposed
22360	22361	Aqua	Aligned
22362	22363	Lime	Aligned
22364	22365	Heather Violet	Aligned

▲ DENOTES CRITICAL DIMENSION

NOTES:

1. ALSO COMPLIANT WITH FOCIS STANDARD TOLERANCE OF ± 0.25

PART	MATERIAL
ADAPTER BODY	POLYETHERIMIDE
SPRING CLIP	STAINLESS STEEL
DUST PLUG	POLYCARBONATE

US CONEC LTD. PROPRIETARY				
THIS DOCUMENT AND THE ASSOCIATED DATA CONTAIN RESTRICTED INFORMATION THAT IS US CONEC LTD. PROPERTY. DISCLOSE OR DUPLICATE FOR OTHERS ONLY AS AUTHORIZED BY US CONEC LTD.				
Material:		SEE TABLE AT LEFT		
REV	DATE	DESCRIPTION	ECN	
L1	1/23/20	ADDED "AK" MARKING TO ALIGNED KEY VERSIONS		
L	2/17/20	REVISED RECOMMENDED PANEL THICKNESS NOTE; ROTATED VIEWS [ZONE B6-D6]		
		RELEASE		
M	5/11/20	ADDED P/Ns 22354, 22355, 22356, 22357, 22358, 22359, 22360, 22361, 22362, 22363, 22364 & 22365 TO TABLES	2267-mm	

CUSTOMER DRAWING

DIMENSIONS FOR REFERENCE ONLY



METRIC/mm

US CONEC

Hickory, NC
800-769-0944
www.usconec.com

TITLE
**ADAPTER, MTP®, SC,
FULL & REDUCED FLANGE**

SIZE A3	S&M Part No.: SEE TABLE	DWG NO. C12036	REV M
SCALE N.T.S.	Drafter J. WAKJIRA	Date: 10/23/2008	SHEET 1 OF 1